

Issue: Using Real COM Mode

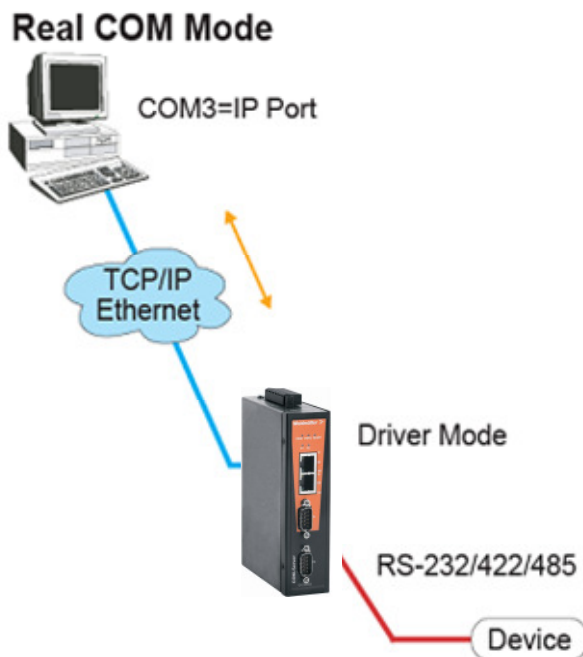
This Technical Note applies to the following Weidmüller Serial/Ethernet Converters:

IE-CS-2TX-1RS232/485
IE-CS-2TX-2RS232/485

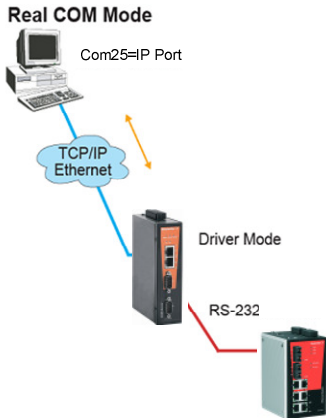
What is Real COM Mode?

In Real COM Mode, the Serial/Ethernet Converter can actively establish a transparent connection between host and serial device by mapping the IP:Port (Using virtual COM Port driver) of the Serial/Ethernet Converter's serial port to a local COM port on the host computer. Real COM Mode also supports up to eight simultaneous connections, so that multiple hosts can collect from the same serial device at the same time.

Note: The COM driver used for Real Com Mode comes with the Weidmüller SE-Converter Administration. The driver is installed automatically on your computer when you install the SE-Converter Administration software.



Testing: Establish a virtual com port connection from Host PC to the terminal access of managed Switch via Serial/Ethernet Converter



1. Configure Serial/Ethernet Converter via Web Console

1.1 Connect the host PC with the Serial/Ethernet Converter using Ethernet cable

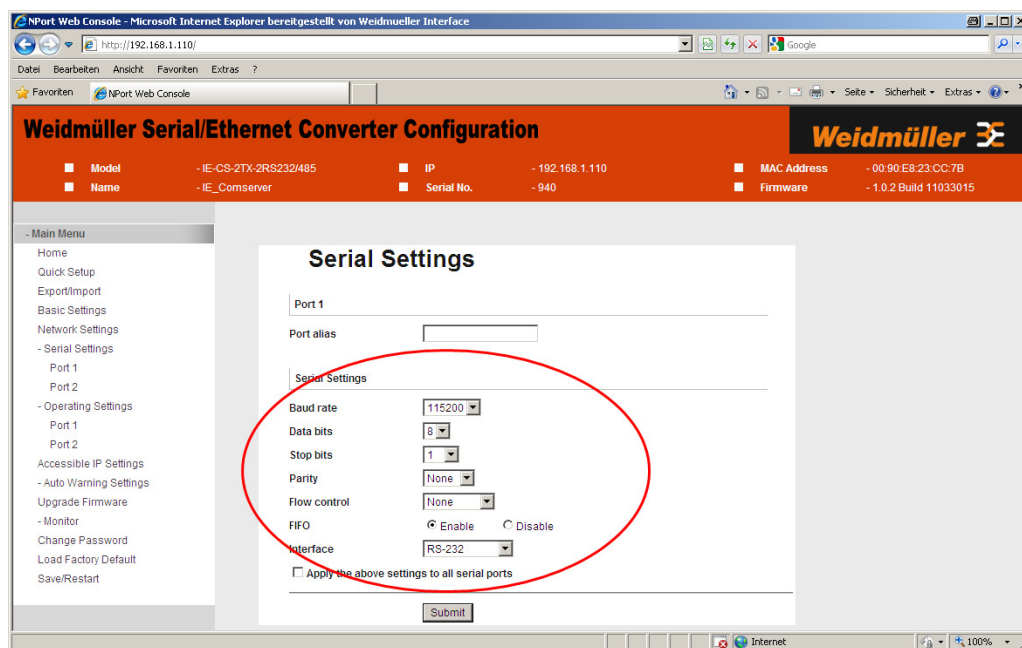
1.2 Adjust the IP settings as necessary so that the Serial/Ethernet Converter is on the same network as your PC. You may also need to modify the host PC's IP configuration. Make sure you can ping the Weidmüller Serial/Ethernet Converter from your host PC.

Note: By default all Weidmüller Serial/Ethernet Converters have the IP address 192.168.1.110

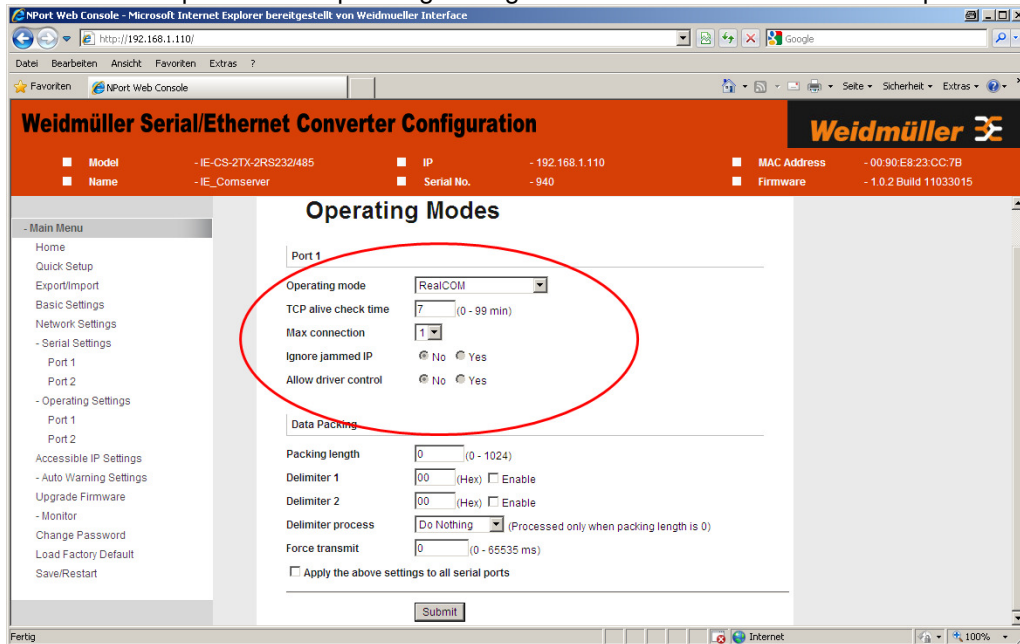
1.3 Log into the Serial/Ethernet Converter via web console (Password: Detmold)

1.4 Select port 1 in the serial settings and configure the parameters as follow:

Note: Default serial settings of the Weidmüller managed switch are: 115200, none, 8, 1, none



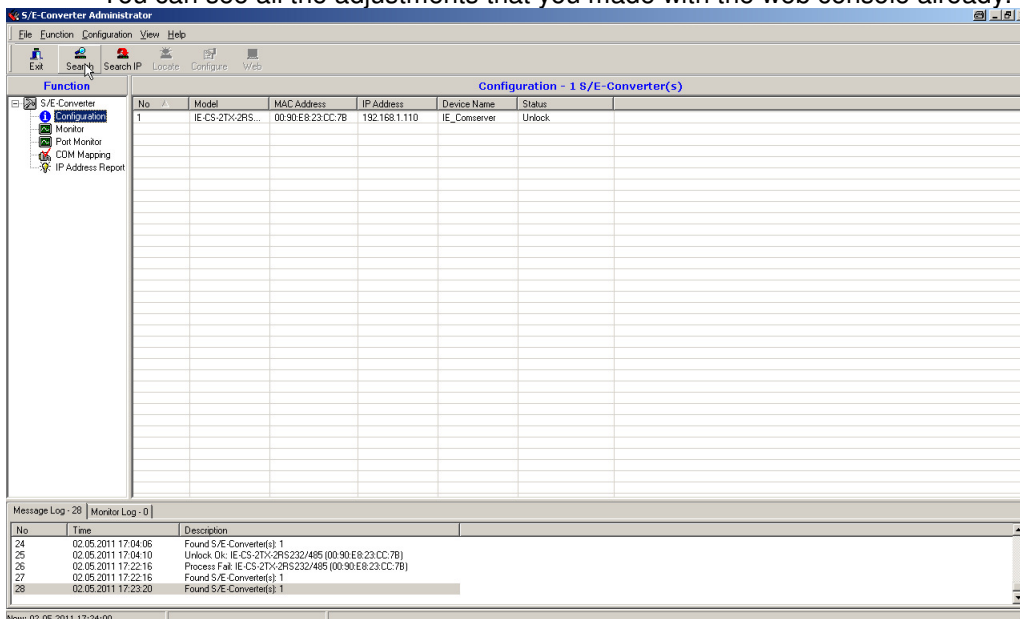
1.6 Select port1 in the operating settings and select “RealCOM” in the drop-down list.



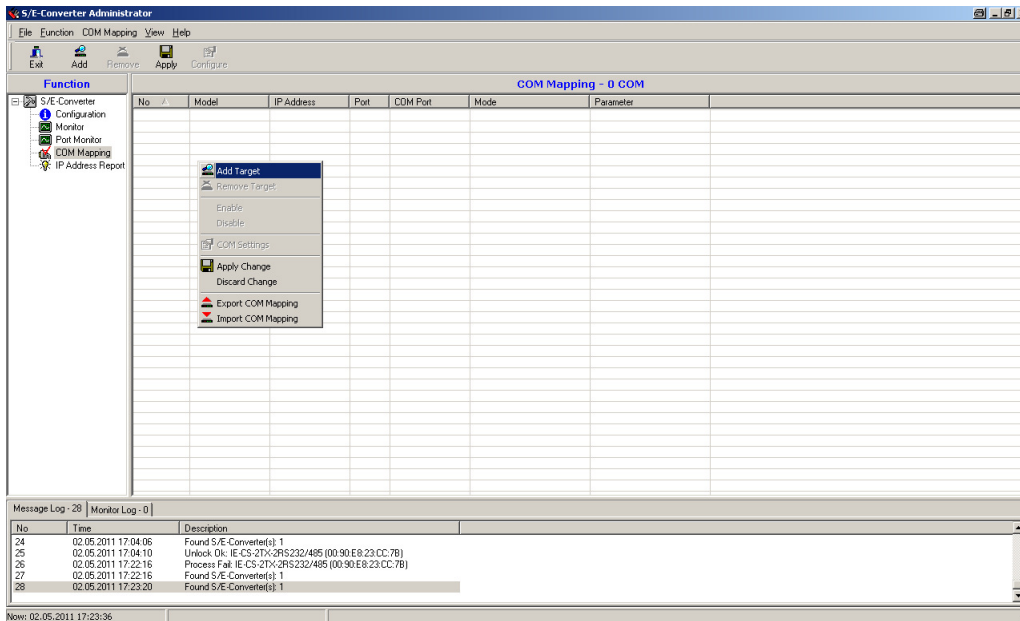
1.7 Click “Submit” to enable the configuration and then click “Save/Restart” to restart the Serial/Ethernet Converter

2. Configure Virtual COM port driver via S/E-Converter Administration on the host PC

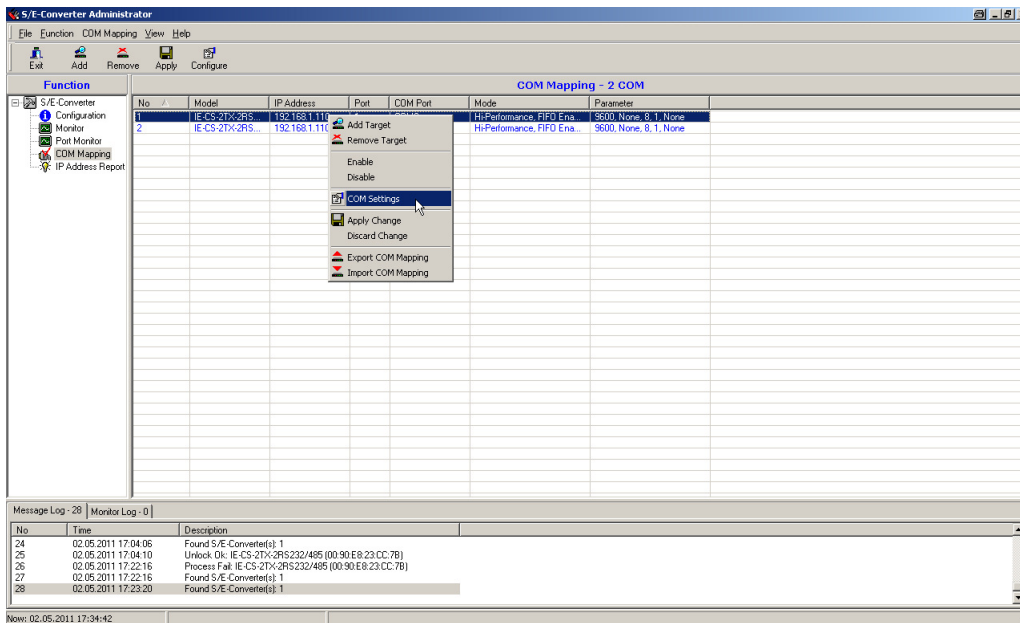
- 2.1 Install the S/E-Converter Administration into the host PC
- 2.2 Start the administration program and click the “Search” button to search the Serial/Ethernet Converter.
- 2.3 When the search is complete, the Serial/Ethernet Converters that were located will be displayed in the right pane of the S/E-Converter Administration window.
- 2.4 If the Serial/Ethernet Converter is password protected (indicated by “Lock” for Status), then select the converter and click the right mouse button and select “Unlock”. Now the configuration is selected! You can see all the adjustments that you made with the web console already.



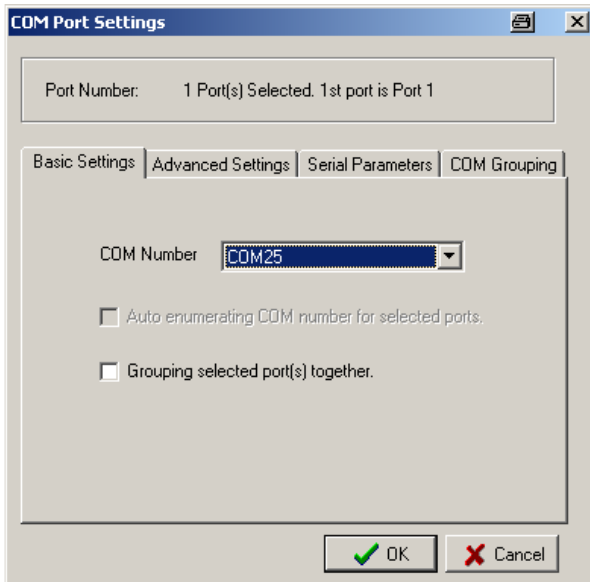
2.5 Select now in the COM Mapping function group and add the target to which you would like to map COM ports with right mouse button.



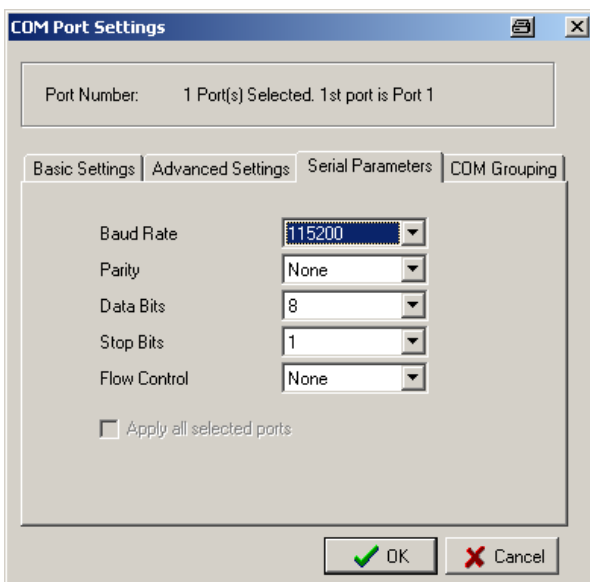
2.6 Select „COM Settings“ to modify COM No., default setting, etc.



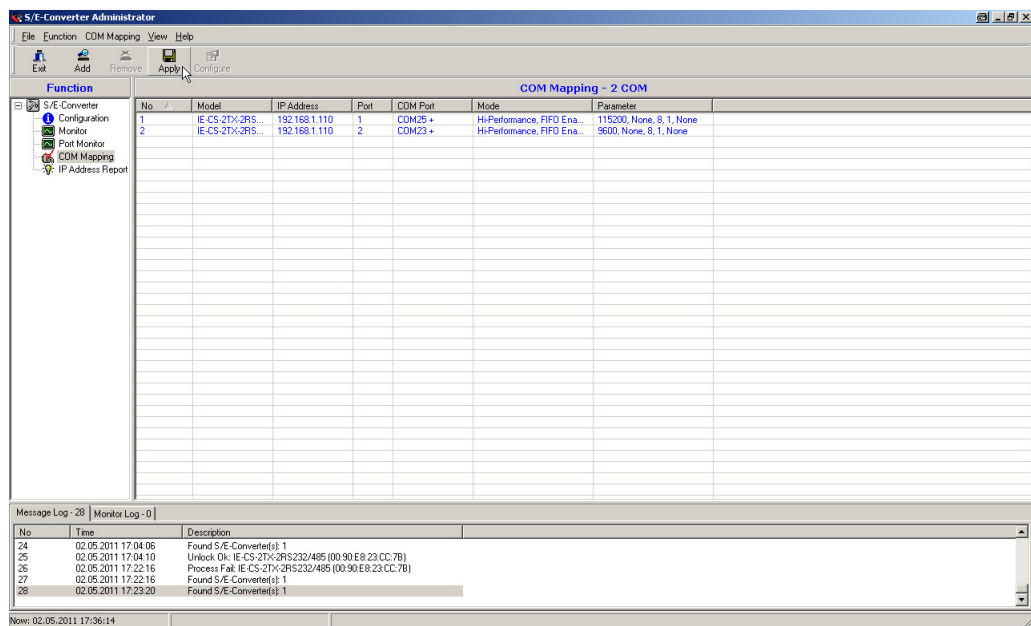
2.7 Select the COM Number that you want to use. Com ports that are “in use” or “Assigned” will also be indicated in this drop-down list.



2.8 The Serial Parameter settings shown here are the default settings when the Serial/Ethernet Converter is powered on. Please set the parameters as follow:

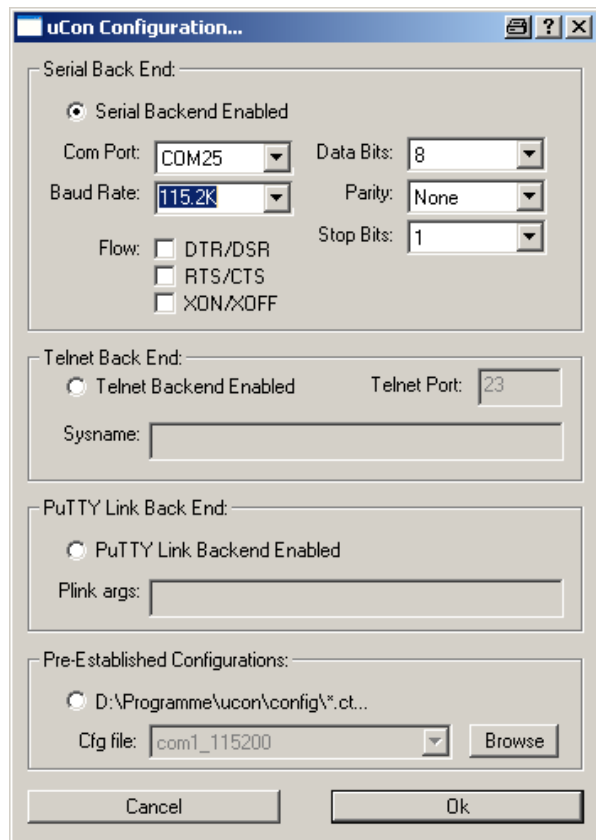


2.9 After setting the COM Mapping, remember to select “Apply” to save the information in the host PC registry.



3. Configure Terminal program on the host PC.

3.1 Select the virtual Com port and set the serial parameters as follow:



3.2 Click the „OK“ and log into the terminal access of the managed switch.

