

What's New - RailDesigner 5.0.3.6

Content

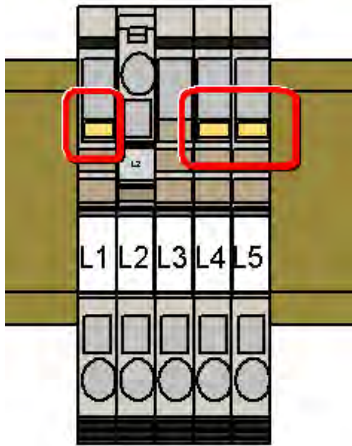
1	New WeiCoS Functions	2
1.1	Coding element for WeiCoS Plugs.....	2
1.2	Protective Cover for WeiCoS Plugs	3
1.3	Stfain relief (ZZE) and central locking element (ZVR) for WeiCoS Plugs	4
2	Improved Printing menu.....	5
3	Multiple adding of busbar connectors	5
4	New Zoom Function.....	5
5	Color printed markers.....	5

What's New - RailDesigner 5.0.3.6

1 New WeiCoS Functions


1.1 Coding element for WeiCoS Plugs

With the new RailDesigner® version you can easily add a coding to a WeiCoS plug. After you've chosen a snap point for a coding you can add a coding with a right mouse click or „menu – Insert – coding”.



View RailDesigner

Coding element **KOSF ZT 2.5**



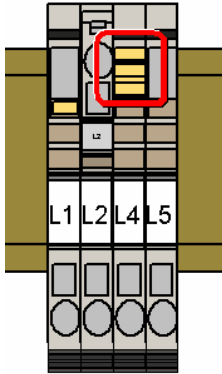
Ordering data	Type	Qty.	Order No.
	KOSF ZT 2.5	50	1816150000

Example product catalog

What's New - RailDesigner 5.0.3.6

1.2 Protective Cover for WeiCoS Plugs

With the new Raildesigner® version the protective covers can be added to WeiCoS plugs. After you've chosen the snap position you can add a cover with a right mouse click or „menu – Insert – protective cover”.



View RailDesigner

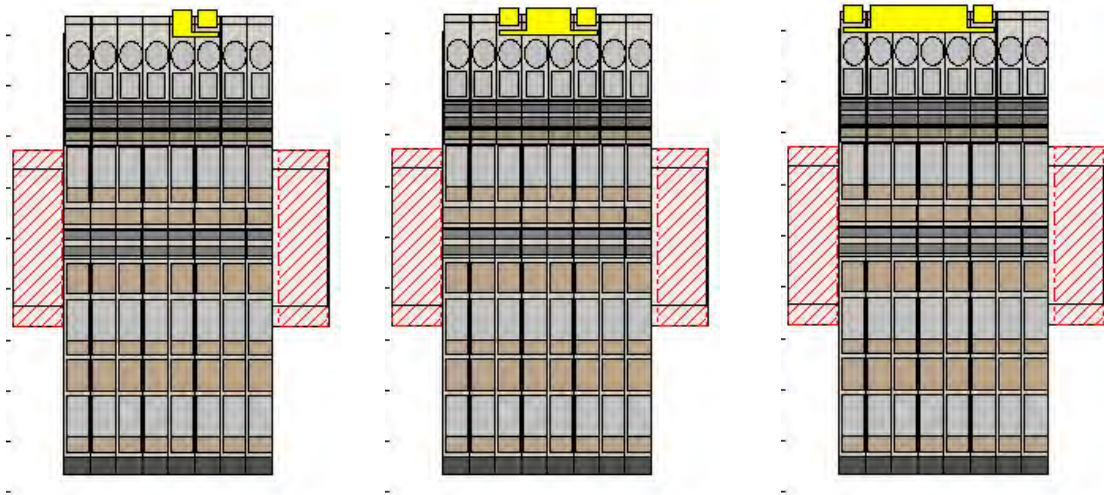
Protective cover		ZAD ZT / ZPS 2.5	
			
Ordering data	Type	Qty.	Order No.
	ZAD ZT / ZPS 2.5	50	1861030000

Example product catalog

What's New - RailDesigner 5.0.3.6

1.3 Strain relief (ZZE) and central locking element (ZVR) for WeiCoS Plugs

Strain relief and central locking elements can now be added to WeiCos Plugs. After you've chosen the snap position you can add a strain relief or a central locking element with a right mouse click or „Menu – Insert – Strain Relief / Central Locking Element“.



View RailDesigner

Alternative to the side-fitting locking element, the central locking element

ZVR ZP 2.5



Ordering data	Type	Qty.	Order No.
	ZVR ZP 2.5	20	1816130000

Strain relief

ZZE ZP 2.5



Ordering data	Type	Qty.	Order No.
	ZZE ZP 2.5 - 1-pole	25	1816140000
	ZZE ZP 2.5/4 - 4-pole	25	1866220000
	ZZE ZP 2.5/8 - 8-pole	25	1866230000

Strain relief

ZZE ZP 4



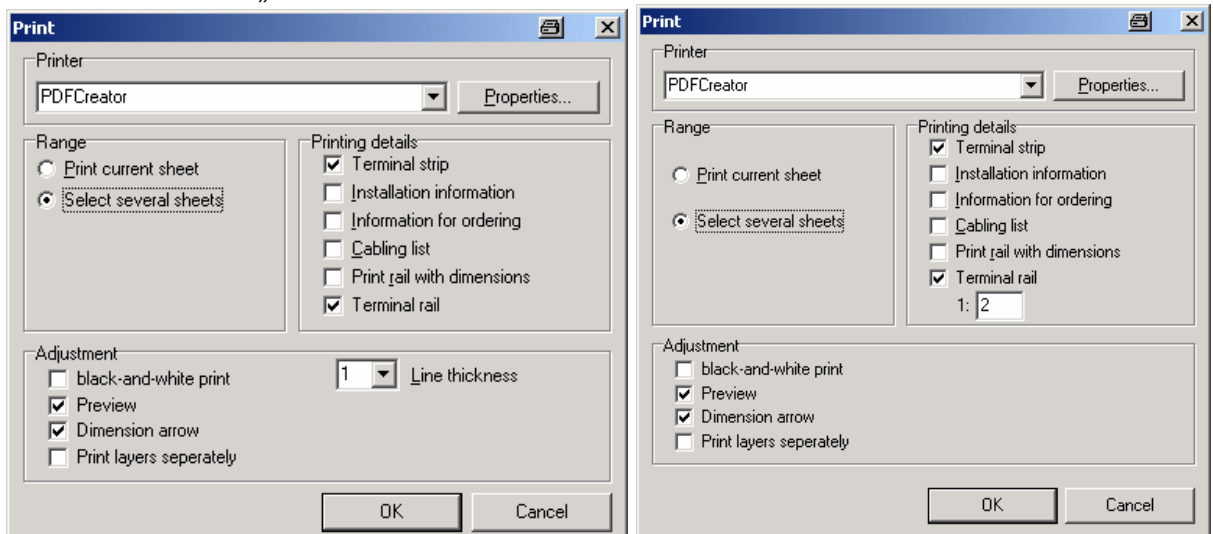
Ordering data	Type	Qty.	Order No.
	ZZE ZP 4	25	1855280000

Example product catalog

What's New - RailDesigner 5.0.3.6

2 Improved Printing menu

Now you can choose a scale in which the terminal rail should be printed out. The standard value is „terminal rail in scale: 1:2“

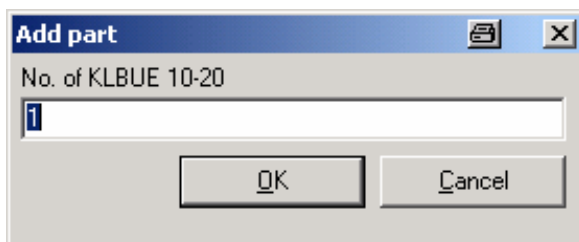


Old printing menu

New printing menu

3 Multiple adding of busbar connectors

When adding a clamping yoke to a busbar you can now add multiple articles of the same kind at once.



4 New Zoom Function

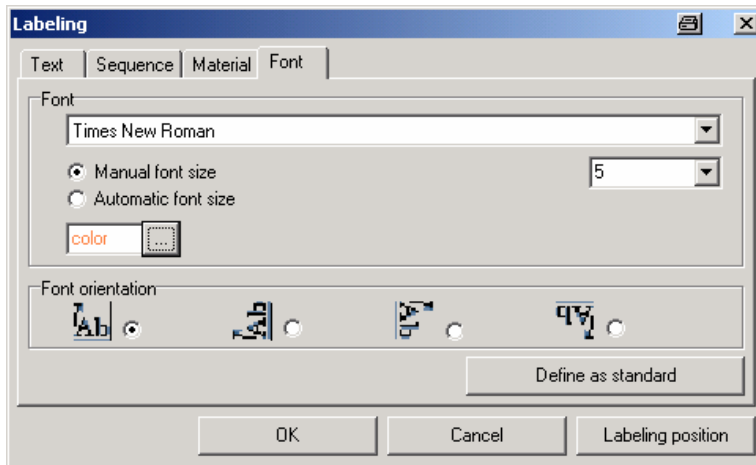
With the new Raildesigner® version the zoom factor can be changed via „Ctrl + mouse wheel“.

It is still possible to zoom in and out via '+' and '-'.

5 Color printed markers

With the new Raildesigner® version it is possible to change the printing color for a marker in the labeling dialog.

What's New - RailDesigner 5.0.3.6



[View RailDesigner](#)