

Markers for WaveLine components



For all Industrial Ethernet WaveLine components

- Switches
- Media converter
- Router

Ordering data

Type	Qty.	Order No.
WS 15/6 MC BLANK	480	1609880000

Note: Can be printed with PrintJet PRO.

Markers for IP67 and SAI components



For all Industrial Ethernet IP67 components

- Switches
- Remote I/Os
- Bluetooth

Ordering data

Type	Qty.	Order No.
ESG 8/13.5/43.3 SAI AU	100	1912130000

Note: Can be printed with PrintJet PRO.

Markers for cables and wires



SlimFix V0 for cables and wires

- Ø 4.7 to 6.8 mm SF5/21
- Ø 5.8 to 8.5 mm SF6/21

Ordering data

Type	Qty.	Order No.
VT SF 5/21 BLANK WS V0	160	1689470001
VT SF 6/21 BLANK WS V0	160	1730560001

Note: Can be printed with PrintJet PRO.

Markers for IE-Line **STEADYTEC**[®]



MultiCard ESG 9/11 K for IE-Line **STEADYTEC**[®]

- 9 x 11 mms
- white

Ordering data

Type	Qty.	Order No.
ESG 9/11K MC white	200	1857440000

Note: Can be printed with PrintJet PRO.

Cable markers and STEADYTEC®

TM-I for pre-assembled M12 cables



MultiCard markers for labeling transparent M12 TM-I sleeves

- Tag length: 18 mm
- Tag length: 4 mm

Ordering data

Type	Qty.	Order No.
TM-I 18 BLANK WS	320	1718431044

Note

Accessories

Type	Qty.	Order No.

Note: Can be printed with PrintJet PRO.

LM MT DIN A5 for IE-Line STEADYTEC®



Cable labels made from polyester:

- with a special coating for laser printers
- abrasion-resistant
- 168 labels/sheet
- 1 shipping unit = 10 sheets
- in six colors

Ordering data

Type	Qty.	Order No.
white	LM MT DIN A5 9/11 WS	10 1964070000
gray	LM MT DIN A5 9/11 GR	10 1964080000
orange	LM MT DIN A5 9/11 OR	10 1964090000
blue	LM MT DIN A5 9/11 BL	10 1964100000
yellow	LM MT DIN A5 9/11 GE	10 1964110000
green	LM MT DIN A5 9/11 GN	10 1964120000

Note

Accessories

Type	Qty.	Order No.
Marking pen	STI-Stift SW	10 0508401694

Note: self-adhesive, for labeling or printing

Dust-protection plugs for protecting empty ports

- RJ45
- **STEADYTEC®** variants

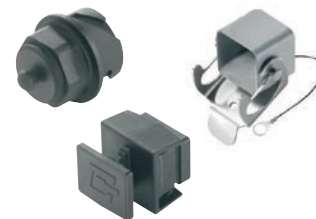
IE-DPC

Dust Cap RJ45



- Dust cap RJ45 with finger grip

IE Line with **STEADYTEC®**



- Protective caps for all **STEADYTEC®** variants

Ordering data

Type	Qty.	Order No.
IE-DPC	100	8813490000

Note

Type	Qty.	Order No.
V1 Bayonet plug	10	1965690000
V1 Bayonet flange	10	1965700000
V4 PushPull plug	10	1963890000
V4 PushPull flange	10	1963900000
V5 HDC plug	10	1963690000
V5 HDC flange	10	1665750000
V14 PushPull plug	10	1058280000
V14 PushPull flange	10	1058310000

Type	Qty.	Order No.
V1 Bayonet plug	10	1965690000
V1 Bayonet flange	10	1965700000
V4 PushPull plug	10	1963890000
V4 PushPull flange	10	1963900000
V5 HDC plug	10	1963690000
V5 HDC flange	10	1665750000
V14 PushPull plug	10	1058280000
V14 PushPull flange	10	1058310000