

PURPOSE

The purpose of this document is to illustrate an application setup using a Siemens S7-300 PLC communicating via Profibus to a Weidmuller WI-GTWY-9-PR1 module.

BACKGROUND

The WI-GTWY-9-PR1 acts as a Profibus DP Slave - the network host a Siemens S7-300 PLC is a Profibus Master. If using a WI-GTWY-9-PR1 with a PLC, the PLC will require an Anybus GSD file so it can recognize the Profibus interface in the WI-GTWY-9-PR1. This file loads into the PLC. The file is available on the same CD as the configuration software or from the Weidmuller web page www.weidmuller.com

Configuration of the Profibus data bus is comprised of allocating a Profibus Slave address to the WI-GTWY-9-PR1 and configuring links between the I/O registers and the Profibus bytes in the Anybus Interface module.

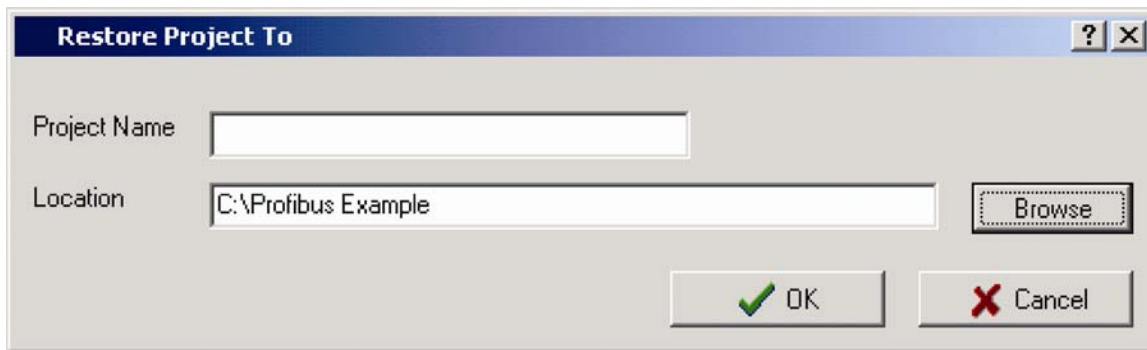
MATERIALS USED

- PC with RS232 comms port
- 1 x Siemens CPU314C-2 DP
- 1 x Simatic S7 PC adapter
- S7 Simatic Manager software
- 1 x WI-GTWY-9-PR1
- 1 x WI-I/O 9-1
- Profibus network connection cable
- Power supplies for both wireless units
- W-Series Configuration Utility (Build 148 or higher)
- RS232 DB9 serial cable
- Anybus GSD file *hms_1003.gsd*

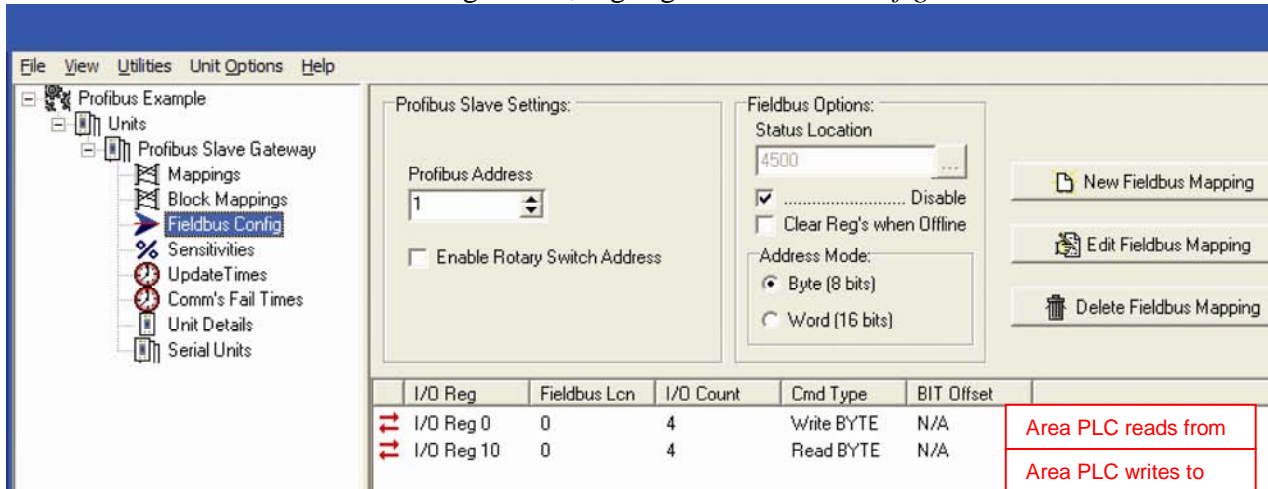
APPLICATION

This application should be read in conjunction with the WI-I/O 9-x and the WI-GTWY-9-xxx User Manuals, this provides extensive details on hardware setup and configuration of the WI-I/O 9-x Radio's. It is expected the reader have a firm understanding of both the S7 Simatic software tool and the W-Series Configuration Utility.

To view the configuration save the file *Profibus W-series config example .zip* to a folder on your PC. Open the E-series configuration utility build 148 or higher, select file/ restore project and locate the zip file saved on PC, select ok leaving Project Name blank. This will extract the files into this folder and load the configuration into the utility program.



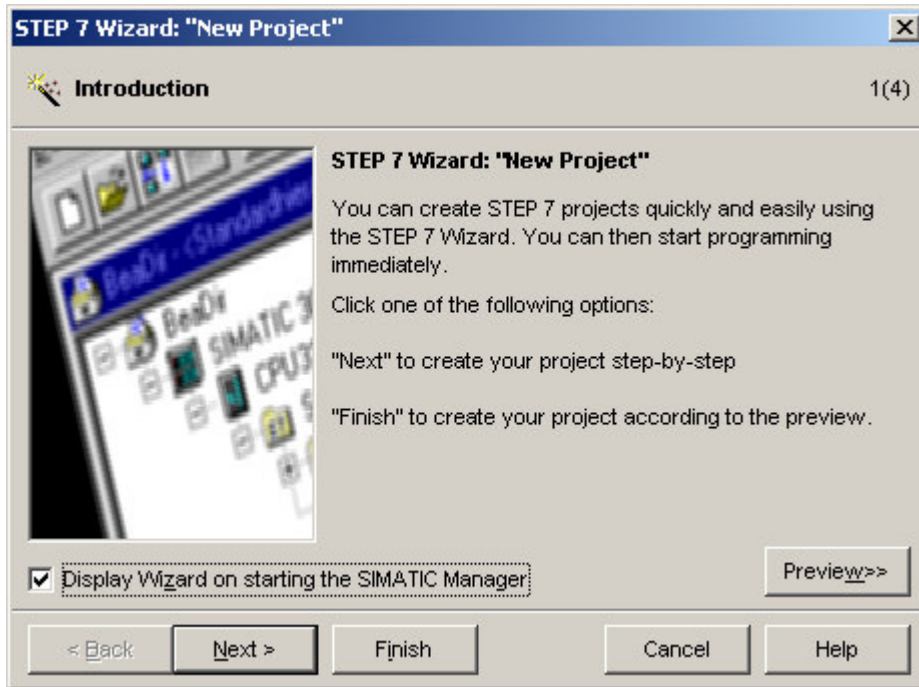
To review W-Series Fieldbus Configuration, highlight “*Fieldbus Config*” as below.



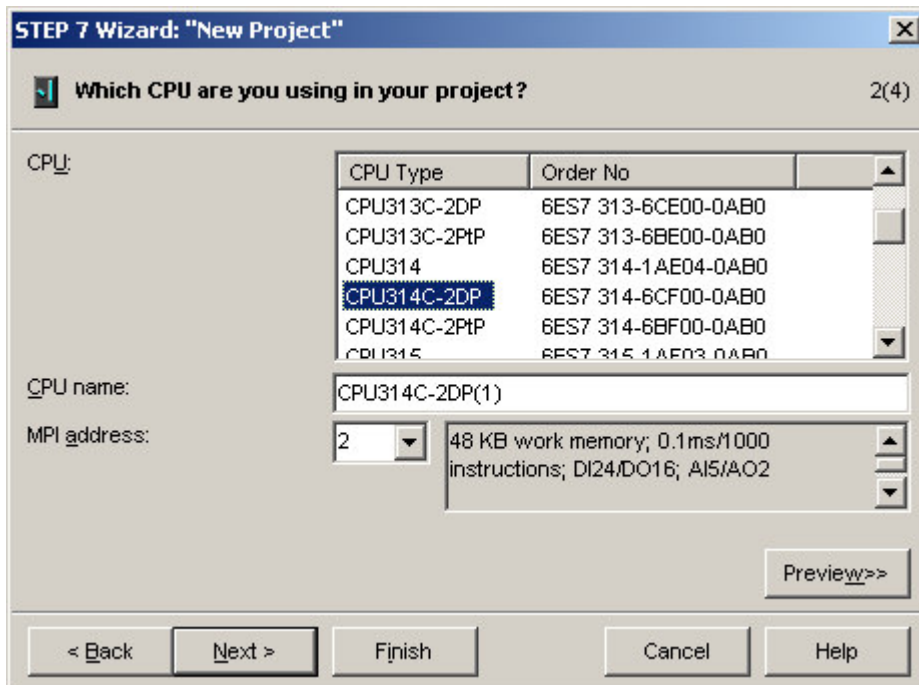
The first Fieldbus mapping is a write bytes command for an I/O count of 4 from I/O registers 0,1,2,3. The PLC will read from Fieldbus location 0 for a count of 4 bytes. I/O registers 0,1,2,3 will have values that remote modules will have had mapped to. i.e. A level from remote module will send to I/O register 0 which is then Fieldbus mapped to a location for the PLC to read from.

The second Fieldbus mapping is the area that the PLC will write to. There are separate IN and OUT Fieldbus areas in the Gateway as to why you can see the same Fieldbus location address.

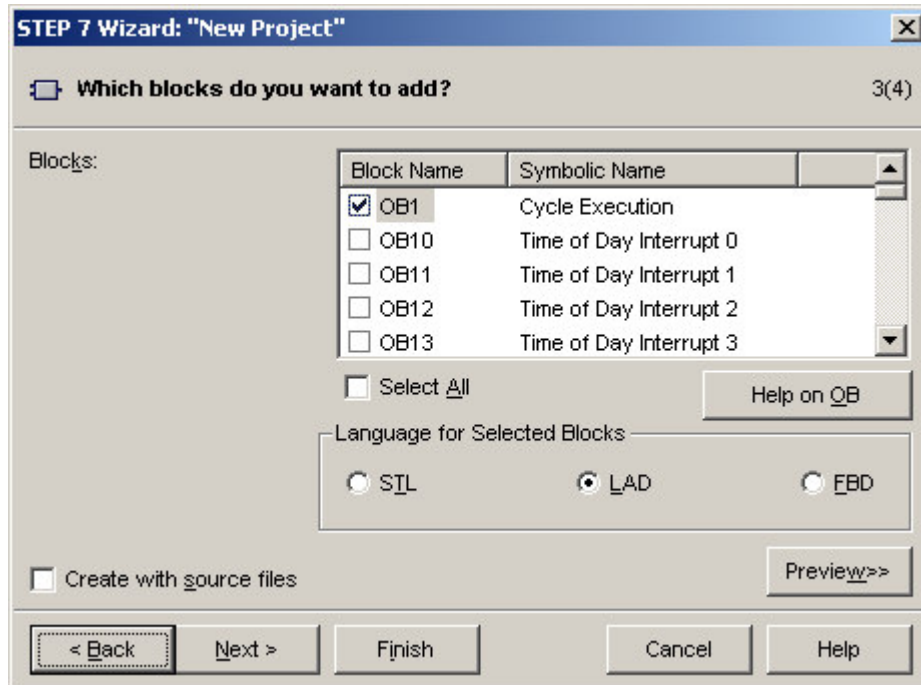
Open Simatic Manager software and follow through Step 7 Wizard: “New Project”.



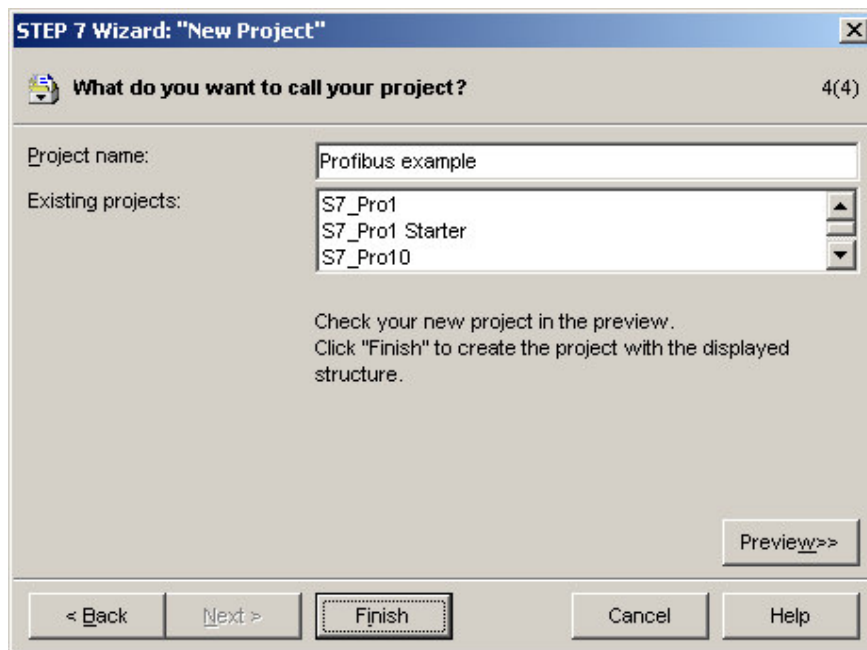
Select Valid PLC Hardware and MPI address, in this example CPU314C-2DP, MPI address 2, and select Next >



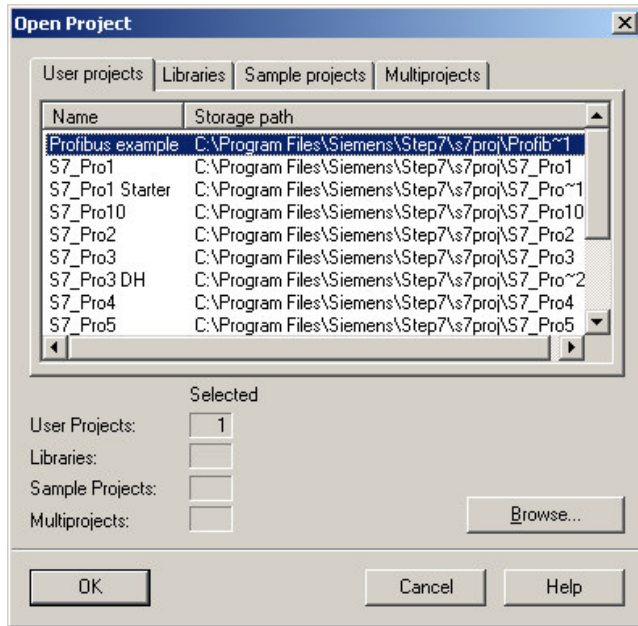
Add OB's and Language in accordance with your program structure, then select Next >



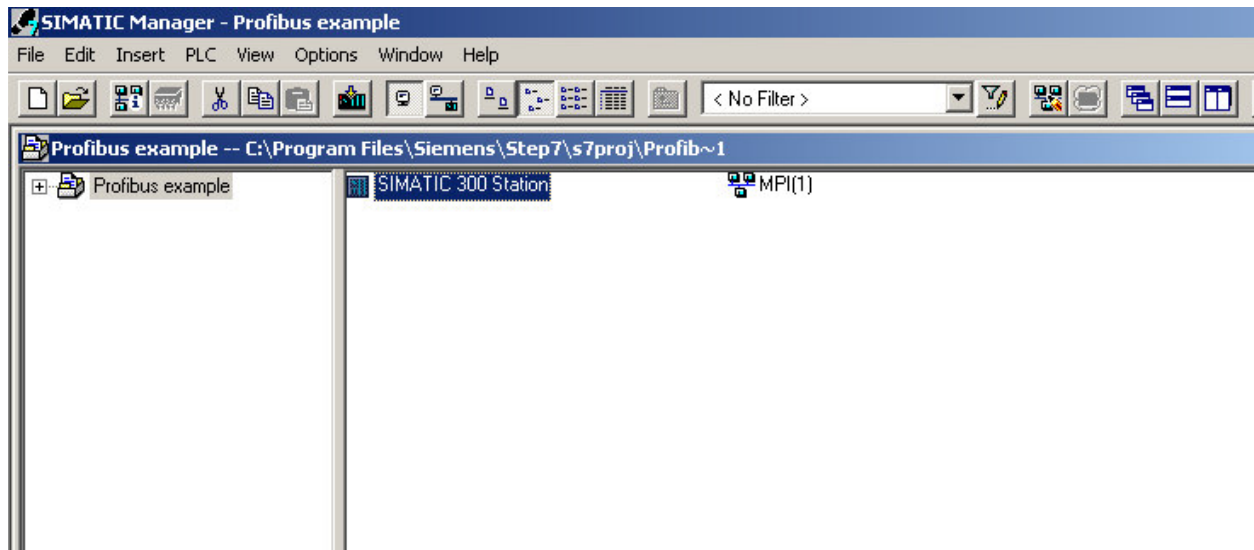
Define project name *Profibus example* and select Finish. Wait while project is created.



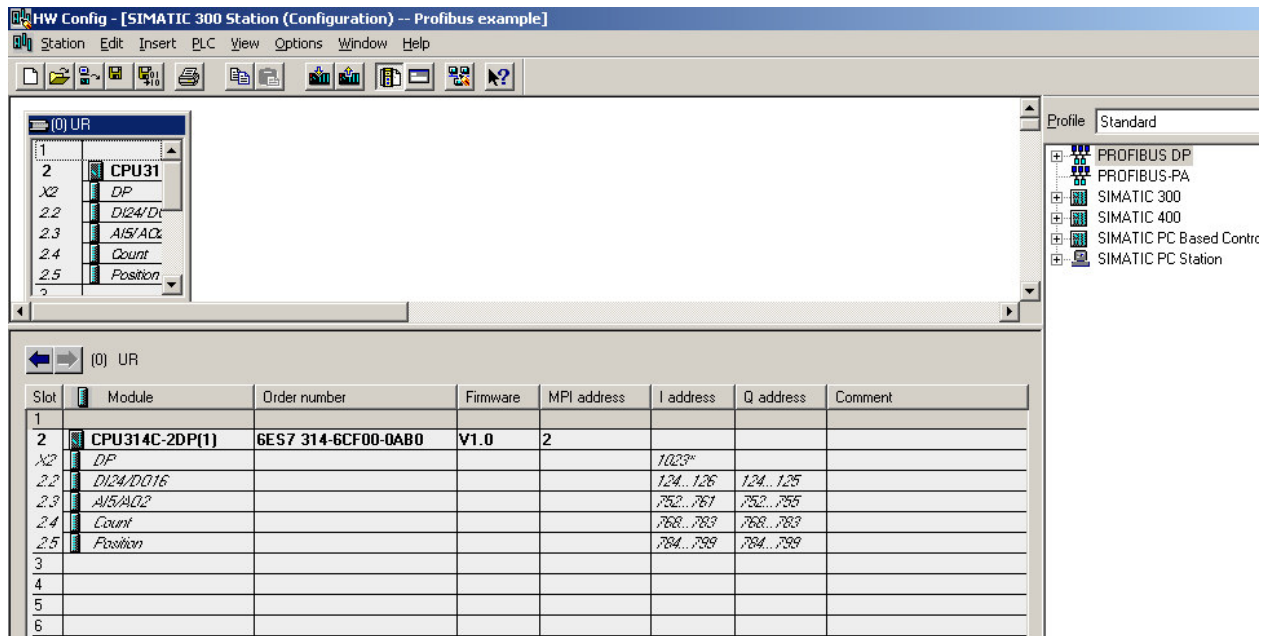
Open Project Menu, highlight project *Profibus example* created, click OK



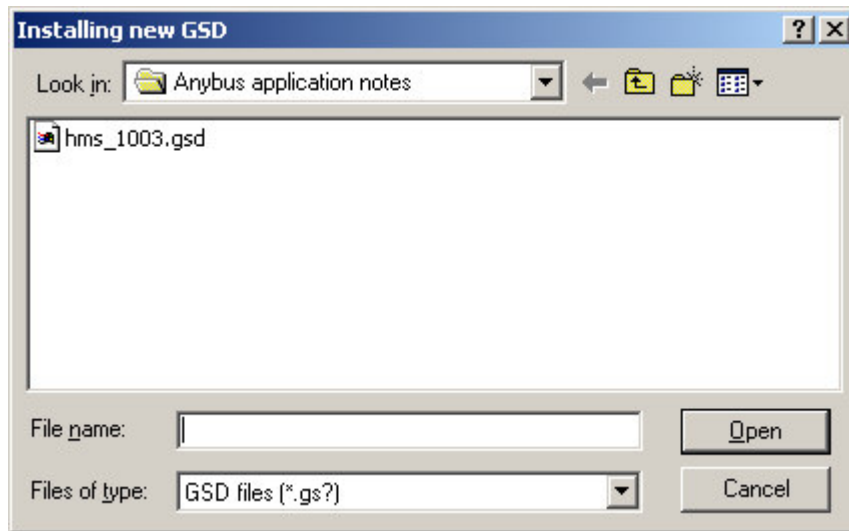
Select Hardware and right click mouse



Click on “Open Object”, the HW configuration screen as below will appear

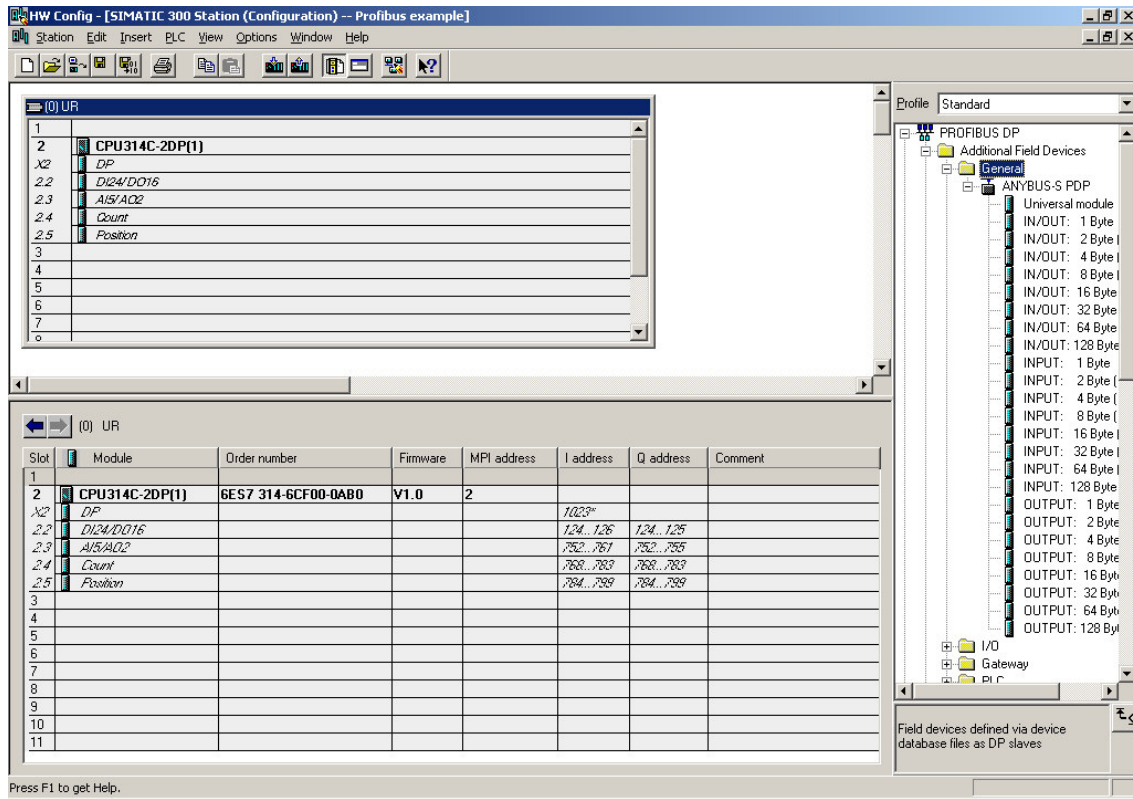


Select Options on Menu bar and New GSD, find and select hms_1003.gsd and Open

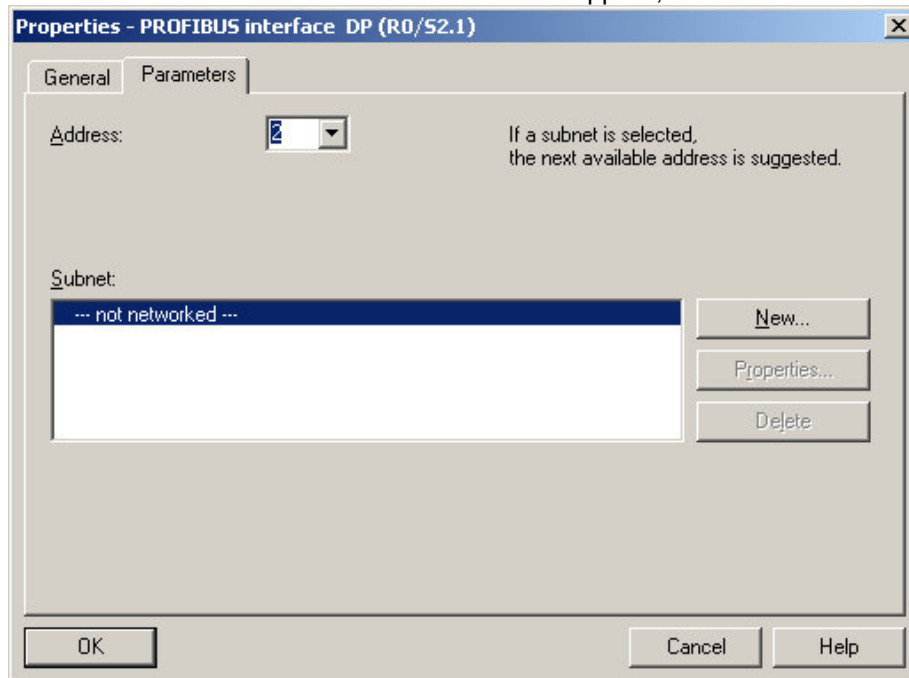


Under View on menu bar, ensure Catalog is ticked. This will allow route directory on right side of directory screen to be viewed as below. Click on the General folder, expand the ANYBUS_S PDP file for the below screen capture to appear.

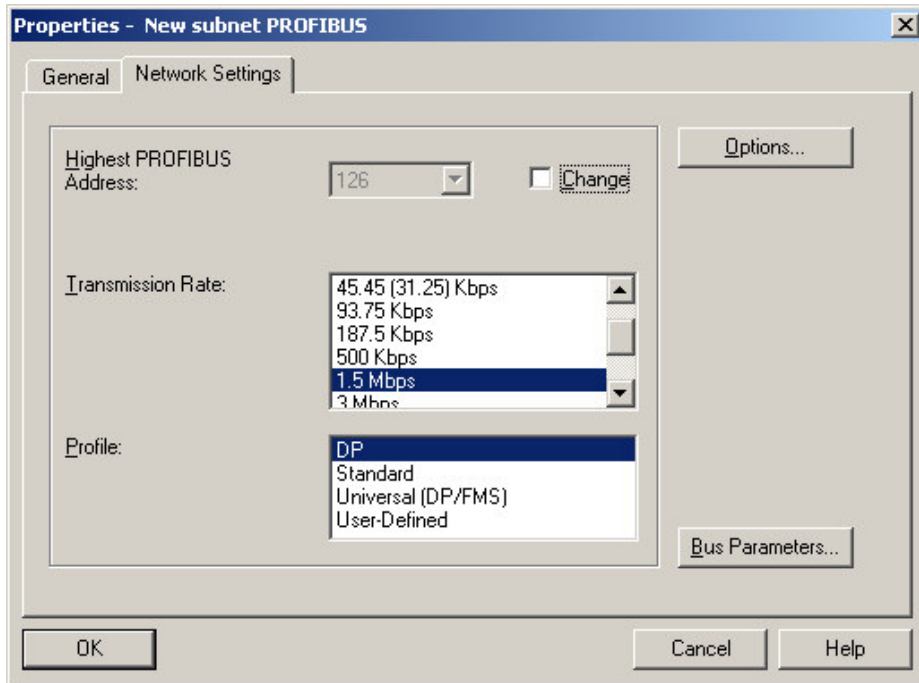
WI-GTWY-9-PR1 Profibus Slave Application Note
 Issue 1.2 – Nov 2008



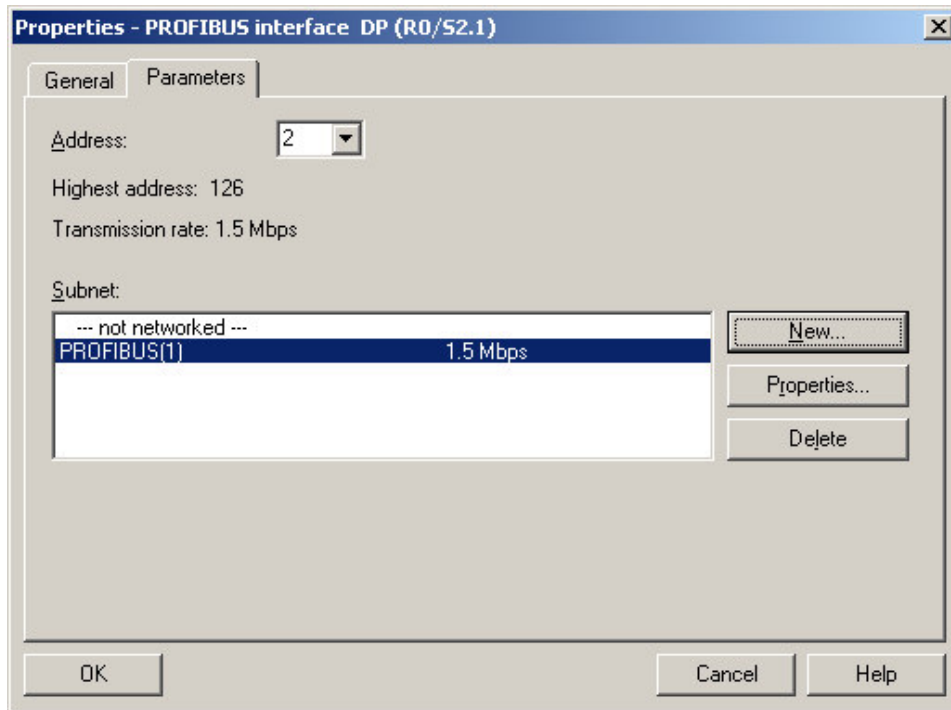
At the (0) UR screen, below CPU314C-DP, select and right click X2 DP, choose Add Master System. With the Parameters TAB selected below screen will appear, ensure Address is 2. Select New.



Select Network Settings TAB and ensure Transmission Rate = 1.5Mbps, Profile = DP, click OK

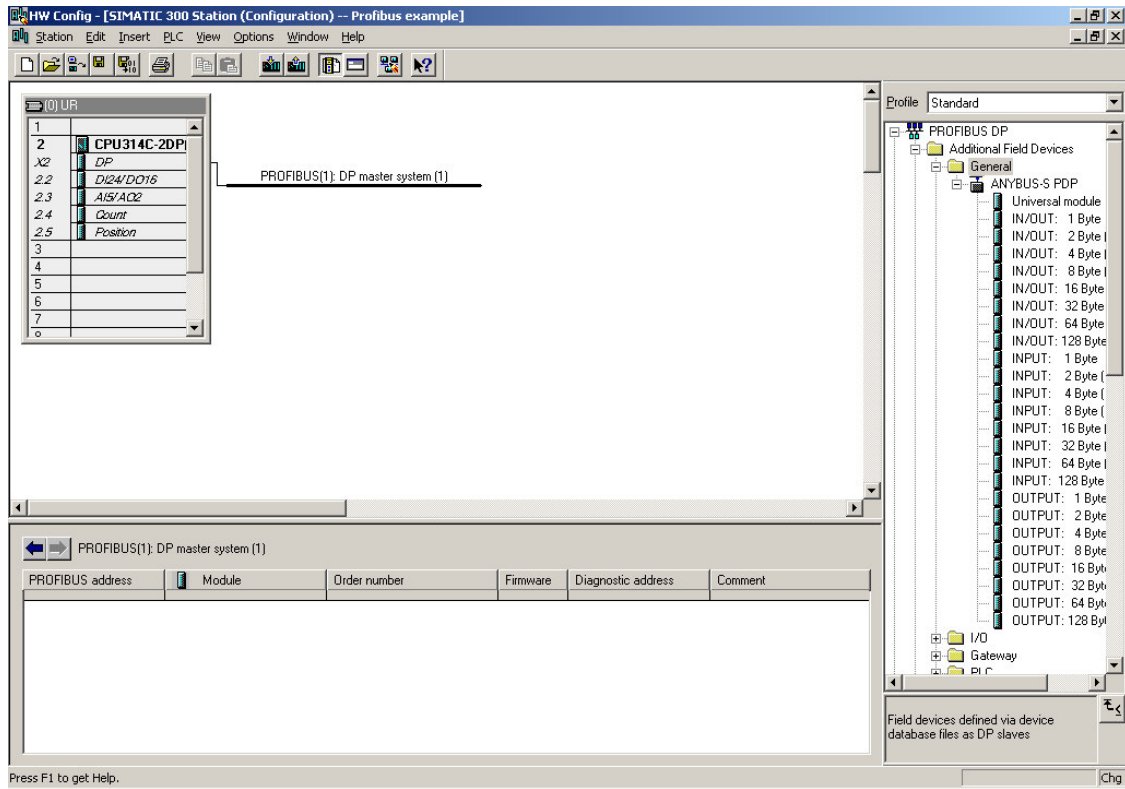


Subnet data screen will appear, with network setup, click OK

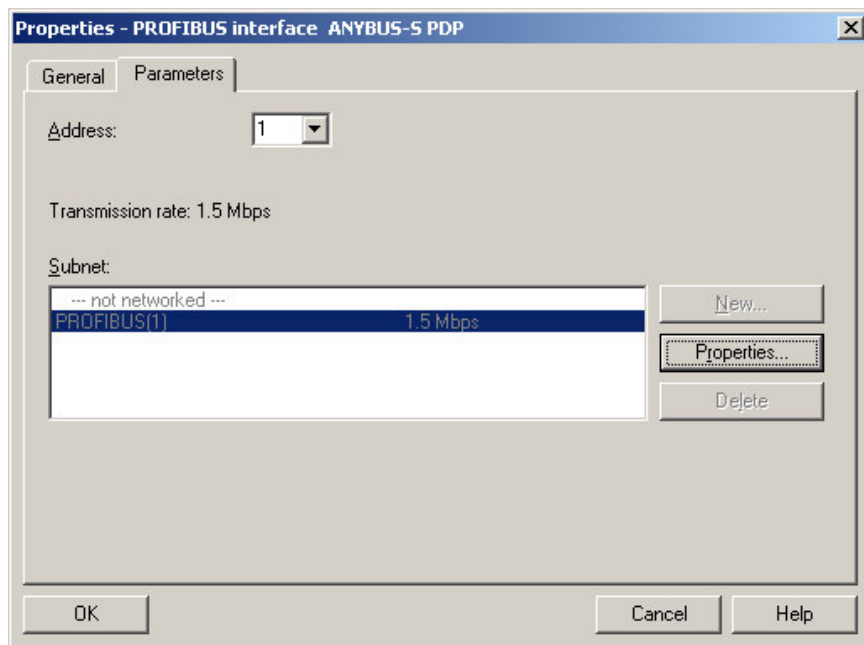


Next configuration screen will appear, with pictorial Profibus (1): DP master system (1) setup.

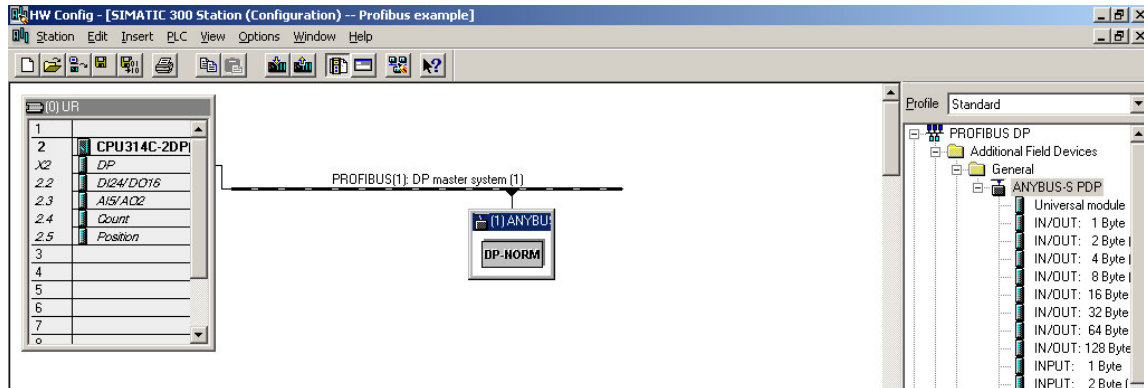
WI-GTWY-9-PR1 Profibus Slave Application Note
Issue 1.2 – Nov 2008



Drag ANYBUS-S PDP folder in route directory and to Profibus (1): DP master system (1) line and enter address 1. **Note this Address 1 needs to be the same address entered in the E-series configuration under Fieldbus Config.**



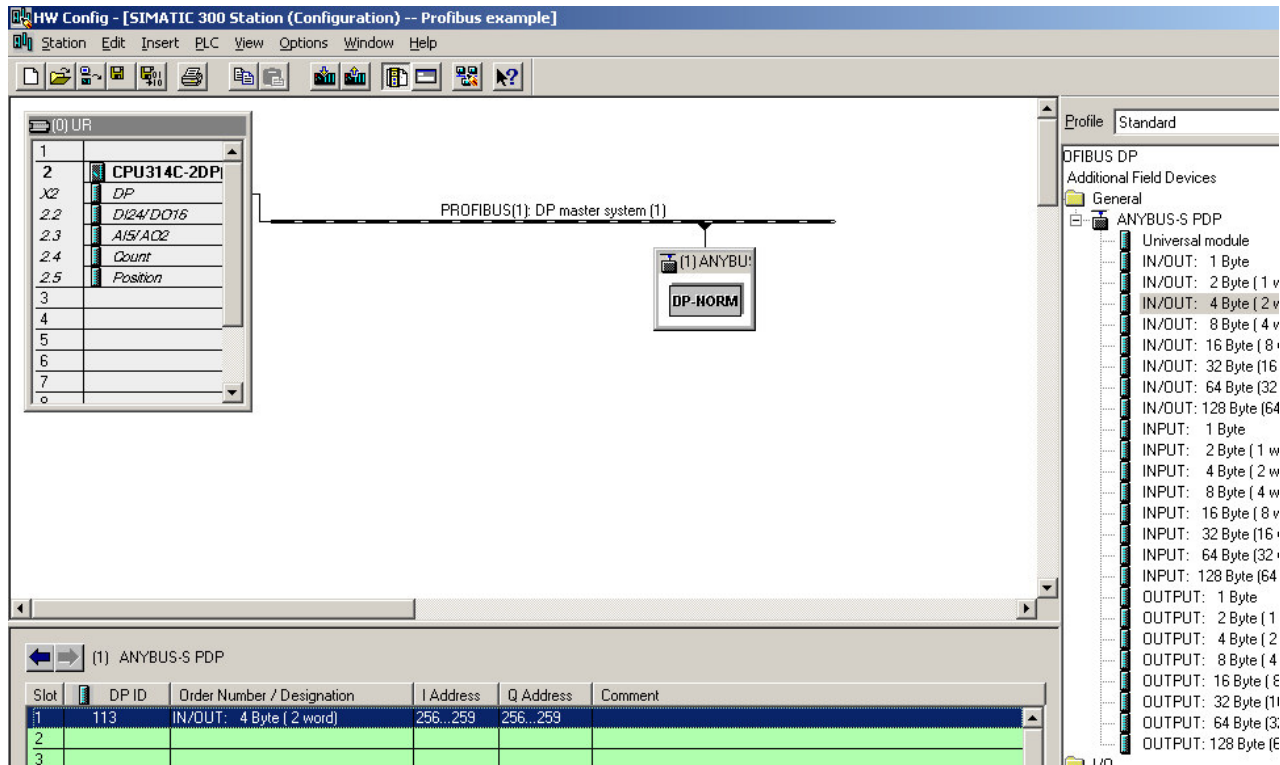
Screen will show (1) ANYBUS connected to Profibus (1): DP master system (1) line and ANYBUS-S PDP object addressing menu at the bottom.



Drag IN/OUT 4 byte into Slot 1,

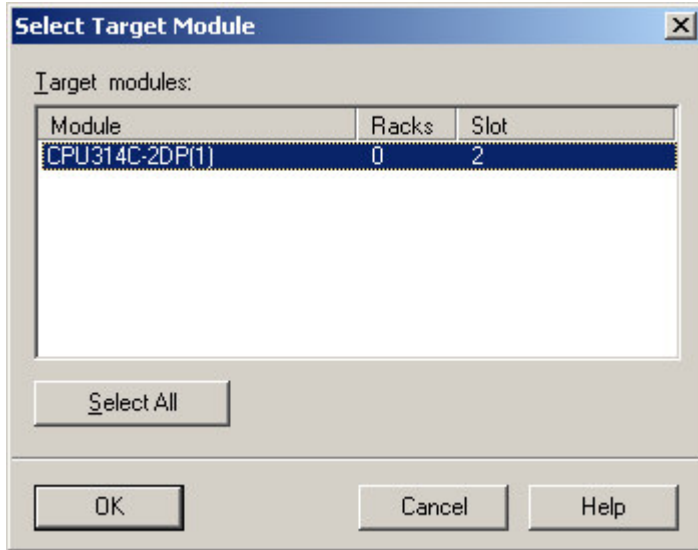
Input PLC addresses I: 256 to I: 259 are written to ANYBUS registers location 0, 1, 2, 3 - IN Area.

The Output PLC addresses Q: 256 to Q259 are read from ANYBUS register location 0, 1, 2, 3 – OUT Area.

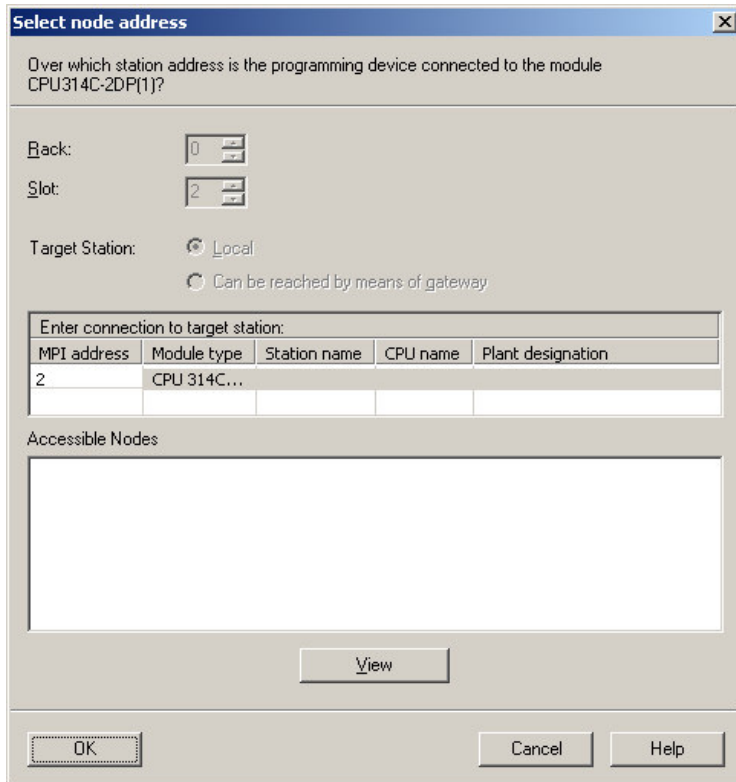


Note: It is important when configuring objects that these objects are embedded efficiently as there is a total of 24 slots available only.

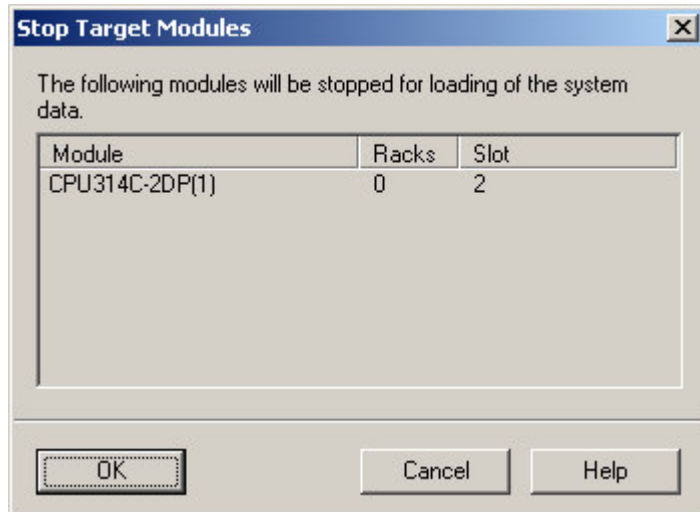
Select Save and Compile under Station on Menu Bar. With Siemens hardware readied, that is, Simatic S7 PC adapter connected to serial cable and PC comm's port and PLC power cycled on, select the Download icon and proceed with downloading project to the PLC. Select Target Module as below and click OK.



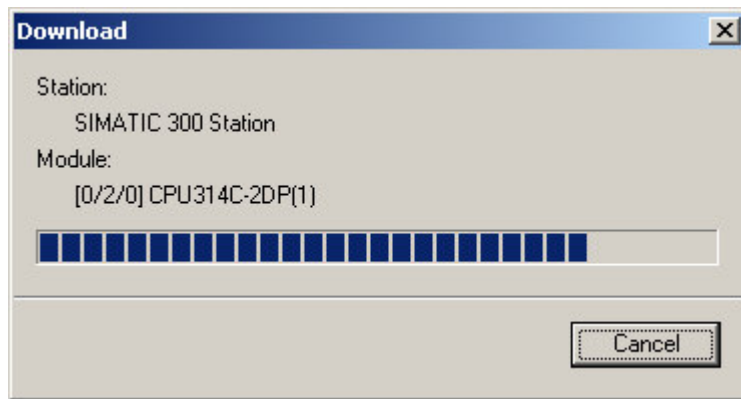
Select Node address when prompted and click OK



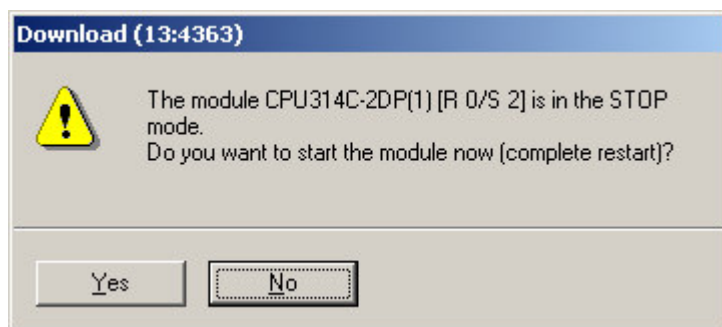
OK if applicable.



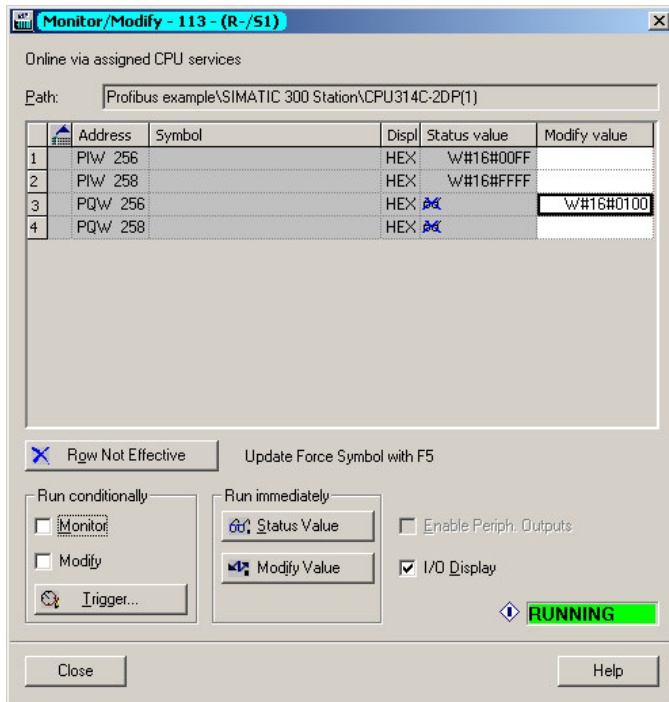
Download continue screen



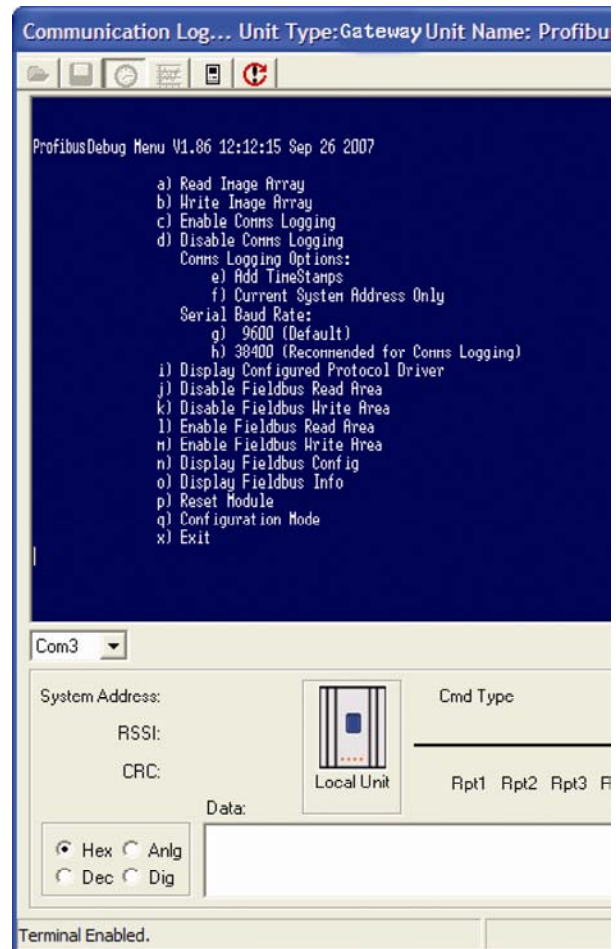
Click Yes



Profibus Configuration is download to the PLC is complete.



Using the Monitor/ Modify Screen you can verify Profibus operations in combination with the diagnostics screen for the Profibus Slave gateway.



The Diagnostics screen of the Profibus gateway allows you to Read Image Array (Values from PLC to I/O registers 0 – 3).

Also Write Image Array to allow you to enter in a value for a specific I/O register (I/O registers 10 – 13) which will then be made available for the PLC to read.